

Product data sheet

Universal automatic switch 2.2 m



Reference number

XX17281XX

Universal automatic switch 2.2 m

for inserts "light" ref.-no.: 1701 SE, 1704 ESE, 1702 SE, 1710 DE, 1711 DE, 1713 DSTE, 1723 NE, 1708 IE

Protection level IP 44 is ensured with sealing kit ref.-no. AS CD 50 DS and "IP 44 frame" of the respective design range.

IP 44 suitable for indoor and outdoor installation

Intended use

- Automatic switching of lighting depending on the thermal movement and ambient brightness
- Operation with flush-mounted insert for switching or dimming or satellite insert 3-wire
- Wall installation on flush-mounted insert

Product characteristics

Functions directly via cover

- Extension of the detection area in combination with 3-wire satellite insert
- Continuous on, Continuous off
- Operation with 2-wire or 3-wire satellite insert, rotary satellite insert or push-button
- Dimming insert can be dimmed via satellite insert
- Resetting to factory setting

Functions via Clever Config App

- Brightness threshold adjustable
- Adjustment of the sensitivity of the PIR sensors
- Run-on time adjustable
- Continuous on, Continuous off
- On or Off for 0.5 - 5 hours
- Switch-off warning
- Dynamic run-on time
- Presence simulation
- Alarm function
- Timer function
- Operating lock
- Reduced basic sensitivity
- Automatic summer/winter time changeover
- Test operation
- Programming of up to 16 individual switching times

In combination with a switch insert

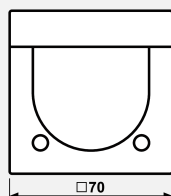
- Short-time operation

In combination with a dimmer insert

- Switch-on with last brightness or saved switch-on brightness
- Adjusting the minimum brightness
- Adjusting the maximum brightness
- Hotel function
- Night light function

Technical data

Ambient temperature:	-20 ... +45 °C
Storage/transport temperature:	-25 ... +70 °C
Brightness setting:	approx. 5 ... 500 lx (and daytime operation)
Sensitivity:	0, 25, 50, 75, 100 %
Shut-off delay:	approx. 10 s ... 60 min
Mounting height:	1.10 / 2.20 m
Detection angle:	180°
Detection range (2.2 m mounting height)	
Sensitivity 25 %:	max. 7 m
Sensitivity 50 %:	max. 11 m
Sensitivity 75 %:	max. 13 m
Sensitivity 100 %:	max. 15 m
Detection range (1.1 m mounting height)	
Sensitivity 25 %:	max. 7 m
Sensitivity 50 %:	max. 8 m
Sensitivity 75 %:	max. 9 m
Sensitivity 100 %:	max. 10 m
Radio frequency:	2.402 ... 2.480 GHz
Transmitting power:	max. 2.5 mW (class 2)
Transmission range:	typical 10 m



IP Protection level IP 44 is ensured with sealing kit ref.-no. AS CD 50 DS and "IP 44 frame" of the respective design range.